

Distance Learning Approaches to Lifelong Learning



People Involved

David Guile
(d.guile@ioe.ac.uk)



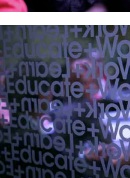
Key Words

distance learning, lifelong learning



Description

The Institute of Education received a proposal from The Association of Company Colleges and Corporate Universities (ACCU) earlier this year to produce a distance learning version of the existing MA in Lifelong Learning.



The intention is to use the Academic Year 2006-2007 to develop the first modules for the new work-based learning MA in close collaboration with colleagues from ACCU.



Work Programme

The first step is to pilot the video arrangements for lectures and seminars during the Summer Term of 2006.

The aim of this pilot session is to ascertain whether it will be possible to video actual teaching sessions from the MA in the Autumn and Spring Terms or whether it will be necessary to set up special video sessions.

Depending on the results of

the pilot session, the second step is to arrange for the ten lectures and seminars which constitute the teaching sessions for the MA Module 'Lifelong Learning: Theories and Perspectives' (LLL: T and P) to be video-recorded either as 'live' or 'simulated' events during the Autumn Term.

In addition to making the arrangements to video record the teaching sessions, there will also be a number of 'playback and feedback' sessions with ACCU colleagues and Institute staff who teach on LLL: T and P to:

- consider the quality of the video materials with respect to content, pedagogy, accessibility etc;
- consider what additional learning materials may be required to supplement the videos;
- plan the next stage of work during the Spring Term.

The third step is to video record the sessions for the new MA Module 'Vocational Learning: Policy and Practice'.

The course leader works closely with Professor Lorna Unwin, the module co-ordinator, during the Autumn

Term to ensure that the new module builds on the success of the module 'Work and Learning' so as to provide the Institute and ACCU with a module that will be attractive to national and international audiences.

The fourth step will be to arrange for 'VL: P and P' to be video recorded and for a 'playback and feedback' session to be set up to consider the quality of the distance materials etc.

Development Programme

The last part of the year will be devoted to working collaboratively with ACCU to:

- recruit tutors from ACCU's partner companies and colleges who will enrol for the MA in order to become tutors who will support the work-based learning of the first cohort of students on the distance learning version of the MA LLL;
- market the new MA within the private and public sector.

wle

Work-based learning for
education professionals
A Centre for Excellence
at the Institute of Education